

Psalm 32: I Turn To You, Lord

Matt Retz

Refrain Em



I turn to you, - Lord, in times of trou - ble, —

5 Em



and you fill — me with the love of sal - va - tion. —

Verse 1

9 G/B



Bless - ed is — the one — whose fault — is tak - en a - way — whose sin —

12 Cmaj7



— is cov - ered, Blest the man — to whom — the Lord — im - putes —

15 G/B



— not guilt — in whose — spir-it there is no — guile. — (to refrain)

Verse 2

20 G/B



I ac-know - ledge my — sin to — you, my guilt I cov - ered not. —

25 G/B



I said, "I — con - fess — my faults — to the Lord," — you took a - way

28 Cmaj7



— the guilt — of my — sin. — (to refrain)

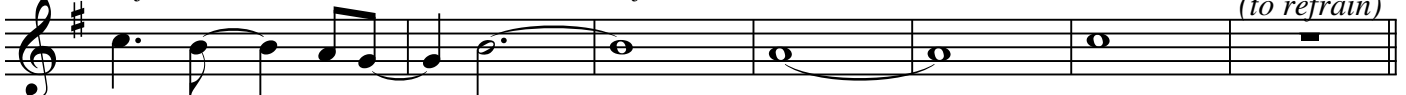
Verse 3

33 G/B



Be glad in the Lord and re - joice You just ex - ult — all you

38 Cmaj7



up right — of — heart. — (to refrain)

Music Copyright 2007 by Matt Retz;

Psalm Text © 1968, 1981, 1997, International Committee on English in the Liturgy, Inc